

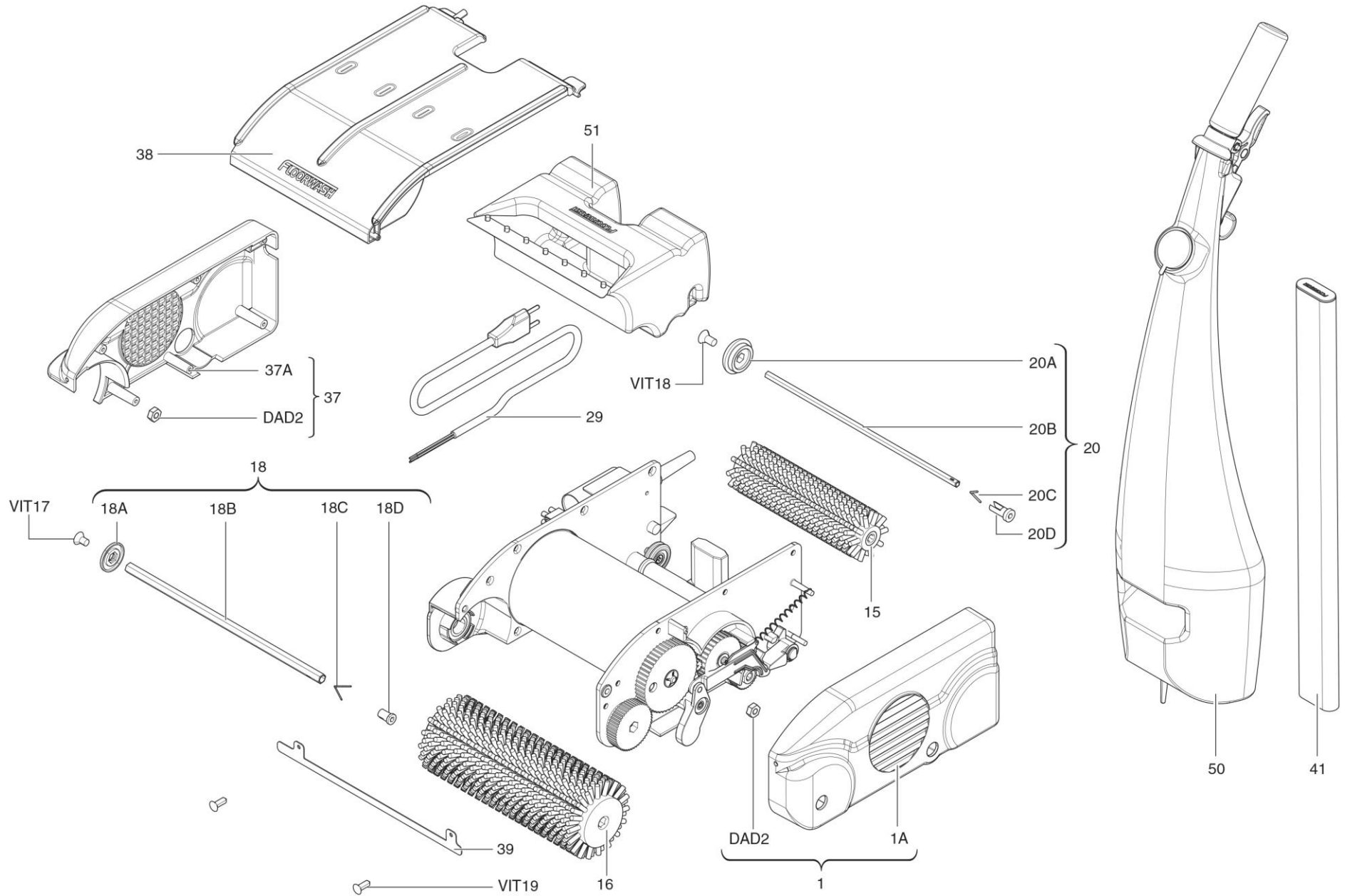


SPARE PARTS FLOORWASH F25

2020

ANNEX A1

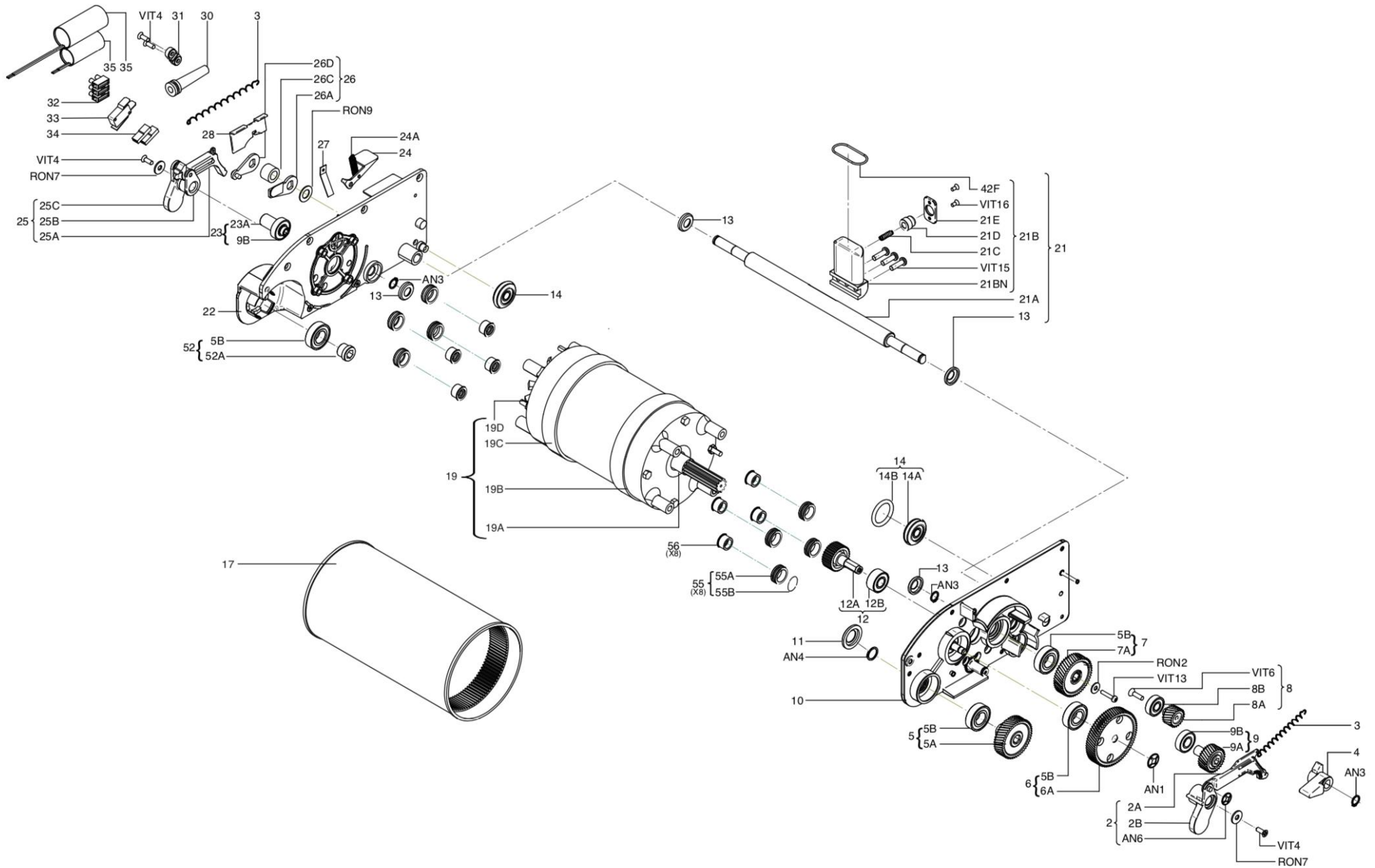
Exploded 1 F25



FLOOR SCRUBBER F25

CODE	DESCRIPTION	QUANTITY	Bild-Seite	Bild-Nr.
01	SIDE CASING LEFT NYLON	1	1	1
01A	OUTSIDE CASING RIGHT NYLON	1	1	1A
DAD2	SQUARE NUT 4MA	2	1	DAD2
CAF25	MACHINE'S BODY F25	1	1	CAF25
15	UNIVERSAL BACK BRUSH	1	1	15
16	UNIVERSAL FRONT BRUSH	1	1	16
VIT17	SCREW A2 FOR EXAGON SPINDLE CH10	1	1	VIT17
VIT18	SCREW A2 FOR EXAGON SPINDLE CH7	1	1	VIT18
18	SPRING EXAGON SPINDLE CH10 COMPLETE	1	1	18
18A	INSERTING BUTTON FOR EXAGON SPINDLE CH10	1	1	18A
18B	EXAGON SPINDLE CH10	1	1	18B
18C	SNAP SPRING FOR EXAGON SPINDLE CH10	1	1	18C
18D	EXPELLING BUTTON FOR EXAGON SPINDLE CH10	1	1	18D
VIT19	SCREW A2 FOR SPLASH PLATE	2	1	VIT19
20	SPRING EXHAGON SPINDEL CH7 COMPLETE	1	1	20
20A	INSERTING BUTTON FOR EXHAGON SPINDLE CH7	1	1	20A
20B	EXHAGON SPINDLE CH7	1	1	20B
20C	SNAP SPRING FOR EXHAGON SPINDLE CH7	1	1	20C
20D	EXPELL BUTTON FOR EXHAGON SPINDLE CH7	1	1	20D
29	COMPLETE CABLE WITH PLUG ITA 7/12 Mt	1	1	29
37	OUTSIDE CASING LEFT NYLON	1	1	37
38	COMPLETE COVER F25	1	1	38
38B	COVER RELEASE SPRING FOR INOX PIN AND POMMEL	1	1	38B
38A	COVER RELEASE INOX PIN	1	1	38A
38C	COVER RELEASE INOX POMMEL	1	1	38C
39	SPLASH PLATE A2	1	1	39
41	HANDLE	1	1	41
50	WATER TANK	1	1	50
51	DIRTY WATER TRAY	1	1	51

FLOOR SCRUBBER F25: MACHINE'S BODY



FLOOR SCRUBBER F25

MACHINE'S BODY

CODE	DESCRIPTION	QUANTITY	Bild-Seite	Bild-Nr.
AN3	SEEGER RING A2 ϕ 12	3	3	AN3
VIT4	SELF TAPPING SCREW TPS+ZN 4,8X16	4	3	VIT4
RON7	FLAT WASHER A2 6X18	2	3	RON7
RIC02	UNDER CARRIAGE LEFT F25	1	3	2
RIC02A	UNDER CARRIAGE ARM LEFT F25	1	3	2A
RIC02B	LIFT OUT PIN OF UNDER CARRIAGE LEFT	1	3	2B
RIC03	TENSION SPRING DF 0,8 mm	2	3	3
RIC04	LEFT CAM	1	3	4
RIC05	COG WITH BEARING ϕ 53 mm	1	3	5
RIC05A	COG ACUSTIC ABSORBENT IN NYLON ϕ 53 mm	1	3	5A
RIC05B	BEARING 6003 2RS INOX	4	3	5B
RIC06	COG WITH BEARING ϕ 78 mm	1	3	6
RIC06A	COG ACUSTIC ABSORBENT IN NYLON ϕ 78 mm	1	3	6A
AN1	LOCK SEEGER RING A2 KS8	1	3	AN1
RIC07	COG WITH BEARING ϕ 53 mm	1	3	7
RIC07A	COG ACUSTIC ABSORBENT. NO SEGER IN NYLON ϕ 53 mm	1	3	7A
RIC08MC	COG WITH BEARING +SCREW ϕ 26mm	1	3	8
RIC08AM	COG without bearing	1	3	8A
RIC08B	BEARRING 6000 2RS	1	3	8B
VIT6	SELF TAPPING SCREW TPS+A2 5,5X19	1	3	VIT6
RIC09	COG WITH BEARING ϕ 33	1	3	9
RIC09A	COG ACOUSTIC ABSORBENT IN NYLON ϕ 33	1	3	9A
RIC09B	BEARING 6001 2RS	2	3	9B
RON2	FLAT WASHER WITH WIDE STRIPE A2 5,3X15	1	3	RON2
VI13	SELF TAPPING SCREW TC+A2 4,2X25	1	3	VI13
RIC10	SIDE CASING LEFT F25	1	3	10
RIC11	BEARING'S GASKET 6003	1	3	11
AN4	SEEGER RING A2 ϕ 16	1	3	AN4
RIC12	INNER COG WITH BEARING ϕ 34	1	3	12
RIC12A	COG ACUSTIC ABSORBENT IN NYLON ϕ 34	1	3	12A
RIC12B	BEARING 63001 2RS	1	3	12B
RIC13	BEARING'S GASKET 6001	4	3	13
RIC14	WHEEL OF TRANSPORTATION	2	3	14
RIC14A	WHEEL OF TRANSPORTATION WITHOUT GASKET	2	3	14A
RIC14B	GASKET FOR WHEEL OF TRANSPORTATION	2	3	14B
RIC17	CENTRAL DRUM L: 206,5 mm	1	3	17
RIC19	MOTOR COMPLETE F25 400W	1	3	19
RIC19A	MOTOR GASKET 15X30X7	1	3	19A
RIC19B	MOTOR LEFT COVER IN AL	1	3	19B
RIC19C	MOTOR RIGHT COVER IN AL	1	3	19C
RIC19D	MOTOR FAN F25	1	3	19D
RIC21	ANODIZED ALUMINUM AXEL F25	1	3	21
RIC21A	ALUMINUM SHAFT ANZ	1	3	21A
RIC21B	QUICK RELEASE BLOCK IN AL ANZ	1	3	21B
RIC21C	COMPRESSION SPRING IN A2	2	3	21C
RIC21D	BUTTON	1	3	21D
RIC21E	BUTTON COVER	1	3	21E

VIT15	SCREW TBEI A2 M6X20	3	3	VIT15
VIT16	SCREW TPS+FE M4X8 ZN	2	3	VIT16
RIC22	SIDE CASING RIGHT F25	1	3	22
RIC23	BRUSH CARRIER WITH BEARING 6001	1	3	23
RIC23A	BRUSH CARRIER WITHOUT BEARING	1	3	23A
RIC 24	START PEDAL INOX	1	3	24
RIC24A	TENSION SPRING FOR STARTING PEDAL	1	3	24A
RIC25	UNDER CARRIAGE RIGHT F25	1	3	25
RIC25A	UNDER CARRIAGE ARM RIGHT F25	1	3	25A
RIC25B	MALE RIGHT CARRIAGE	1	3	25B
RIC25C	FEMALE RIGHT CARRIAGE DESTRO	1	3	25C
RIC26	CAM RIGHT COMPLETE	1	3	26
RIC27	INOX SPRING	1	3	27
RIC28	LIFTING PLATE INOX	1	3	28
RIC30	CABLE BRIDGE WITH DOUBLE RING	1	3	30
RIC31	CABLE BLOCK	1	3	31
RIC32	TERMINAL NY 10MMQ 12P+REED	1	3	32
RIC33	MICROSWITCH+ DEHYDROGENATED LEVER	1	3	33
RIC34	FASTON COVER NY 6,3 BMM 01022	2	3	34
RIC35	CAPACITOR 8MF 450V 30X69	1	3	35
RIC36	CAPACITOR 4MF 450V 25X57	1	3	36
RIC52	BRUSH CARRIER DARLYN WITH BEARING 6003	1	3	52
RIC52A	BRUSH CARRIER DERLYN WITHOUT BEARING	1	3	52A
RIC55	ROLL SPIN C.R.	1	3	55
RIC55B	OR GUM 7.12X2,62 FPM75 FOR ROLL SPIN F25	1	3	55B
RIC56	BRASS BUSH ø17x10,2 (8 Stück)	1	3	56
RIC57	ROLL SPIN WITH BUSH	1	3	57

FLOOR SCRUBBER F25		HANDLE AND TANK		
CODICE	DESCRIPTION	QUANTITY	Bild-Seite	Bild-Nr.
RIC40	SEALING CAP AND HANDLE RELEASER	1	6	40
RIC40A	NYLON CAP FOR THE HANDLE	1	6	40A
RIC41	COMPLETE HANDLE F25	1	6	41
RIC41A	EAMPTY HANDLE WITH HOLES ϕ 14 + ANZ F25	1	6	41A
RIC42	COMPLETE WATER VALVE F25	1	6	42
RIC42A	VALVE F25	1	6	42A
RIC42B	GASKET 4,9 X 1,9	1	6	42B
RIC42C	BRASS TERMINAL	1	6	42C
RIC42D	COMPRESSION SPRING	1	6	42D
RIC42E	CABLE INOX L: 1MT	1	6	42E
RIC42F	GASKET 23 X 2,50	1	6	42F
RIC42G	THREAD NUT	1	6	42G
VIT14	SCREW TMT A2 5X8	6	6	VIT14
RIC43	HANDLE PLATE AL ANZ	1	6	43
RIC44	TANK CAP ϕ 41+LINGUETTA	1	6	44
RIC45	WATER TRIGGER F25	1	6	45
RIC46	BRASS NUT	1	6	46
GR1	GRANO PUNTA PIATTA A2 4X6	1	6	GR1
RIC47	SLIP RESISTANT HANDLE	1	6	47
RIC48	WATER TANK CABLE LOCK	1	6	48
RIC49	WATER TANK	1	6	49
RIC50	COMPLETE WATER TANK F25	1	6	50
RIC54	Water pipe	1	6	54